



Using Summit Products in the Windows Vista/Office 2007 Environment

© MIE Software 2007

Last Reviewed: 16 May 2007

Contents

Introduction	1
Installation	2
Desktop and Program Menu Shortcuts	3
Security Warnings when Summit program is launched	6
Other Issues	16
Summit Menus	16
On-Line Help	18
E-Mailing from within Summit Programs	29

Introduction

While we recommend that users continue to use the Office 2003 versions of our software with Office 2003 Professional we recognise that many users can now only purchase computers with Windows Vista and Office 2007.

While Access 2007 can open existing Access 2000, Access 2002 and Access 2003 versions of our software, our clients have encountered a number of issues and problems.

To date, the main issues/problems our clients have had with using the current versions of our software in the Windows Vista/Office 2007 environment are:

1. Which version of current software should be installed?
2. Multiple security warnings are displayed whenever the software is opened
3. The Summit menus at the top of the screen are not displayed
4. The on-line help cannot be accessed
5. Summit products cannot e-mail in conjunction with Outlook 2007

The purpose of this document is to explain the steps needed to deal with each of these issues.

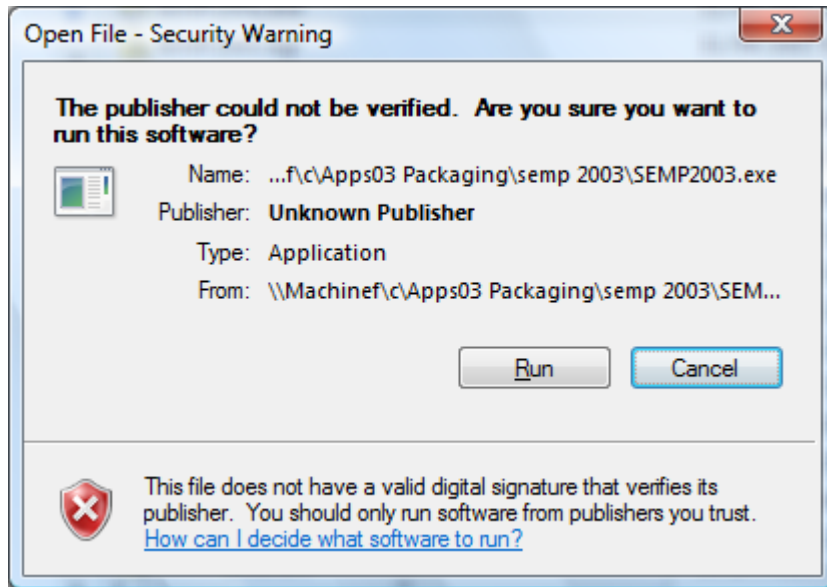
IMPORTANT NOTE

All file and folder locations in this document assume that all Summit products and Office 2007 have been installed in their default folders. You will need to adjust these instructions if the Summit products or Office 2007 are not installed in their default folders.

Installation

Users should select the Access 2003 installation of the relevant product. This example uses Summit Event Manager – Pro.

The selected installation program is semp2003.exe. When the user attempts to run semp2003.exe they will get the following warning:



They should click on Run. They will then be shown another warning about running semp2003.exe saying that “An unidentified program is trying to access your computer”. The options are Cancel or Allow. They should select Allow. The installation program should then complete successfully.

Desktop and Program Menu Shortcuts

Before attempting to use Summit the user should change the target of both the Summit Event Manager – Pro and Compact Software shortcuts to look for Access 2007 instead of Access 2003.

Specifically, the target of the Summit Event Manager – Pro shortcut changes from:

"C:\Program Files\Microsoft Office\Office11\MSACCESS.EXE" "C:\semp\semp.mdb"

To

"C:\Program Files\Microsoft Office\Office12\MSACCESS.EXE" "C:\semp\semp.mdb"

The target of the Compact Software shortcut changes from:

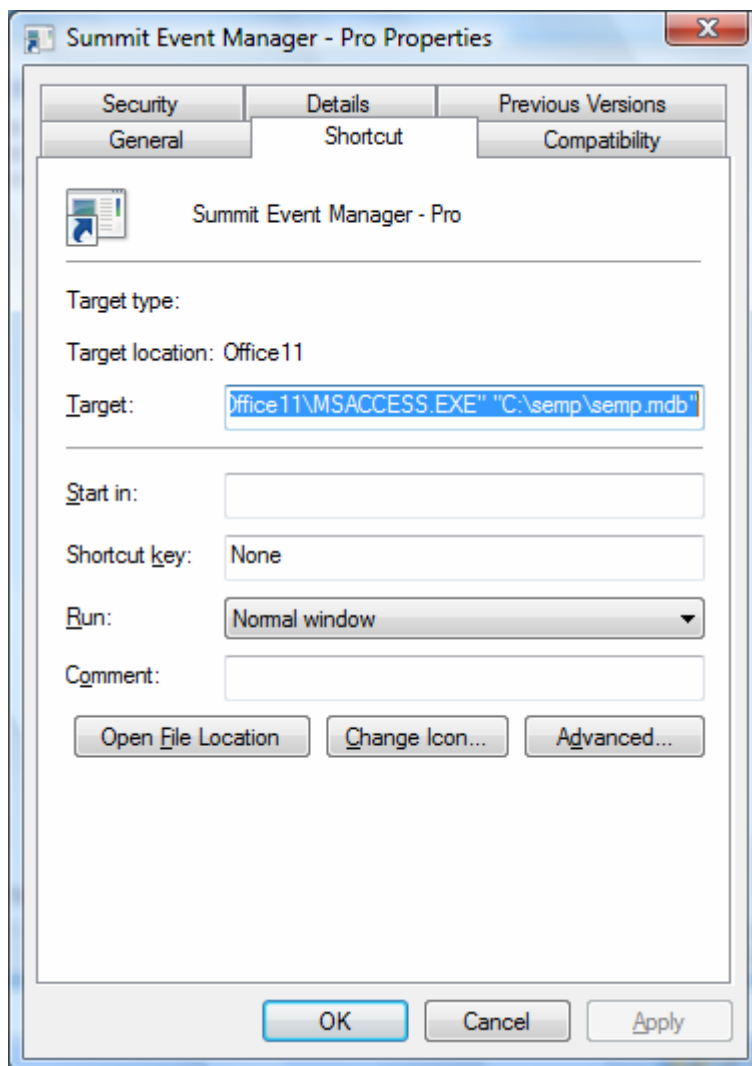
"C:\Program Files\Microsoft Office\Office11\MSACCESS.EXE" "C:\semp\semp.mdb"
/Compact

To

"C:\Program Files\Microsoft Office\Office12\MSACCESS.EXE" "C:\semp\semp.mdb"
/Compact

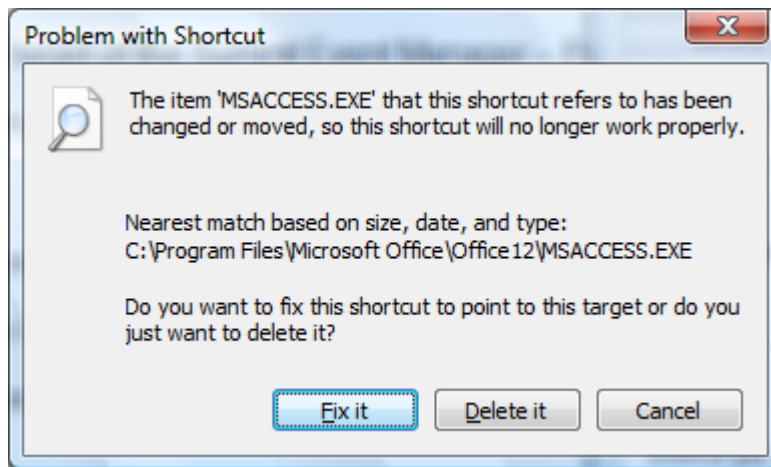
The target property is accessed by right mouse clicking on the shortcut and selecting Properties.

This displays the following:



The user should change the wording in the Target field and then click Apply.

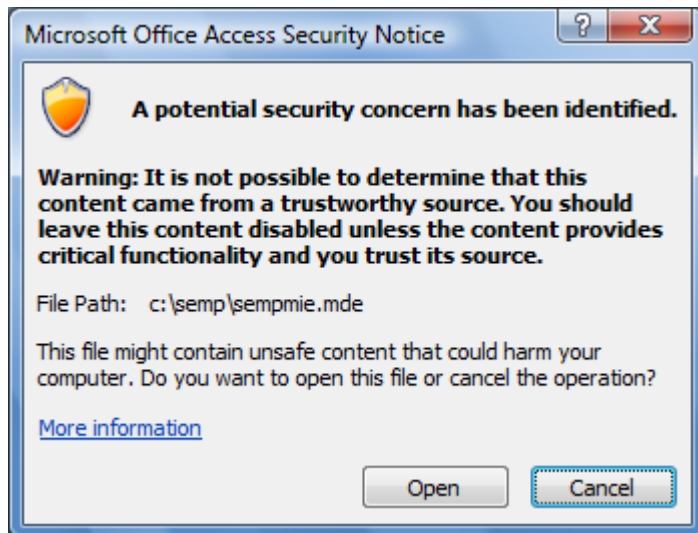
Alternatively, the user can use the existing shortcuts. If a user clicks on an existing shortcut, after a short period the following will be displayed.



If the user selects Fix it, the shortcut is corrected automatically, but the change is not saved and this correction will be repeated each time the user uses that shortcut until they manually change the shortcuts.

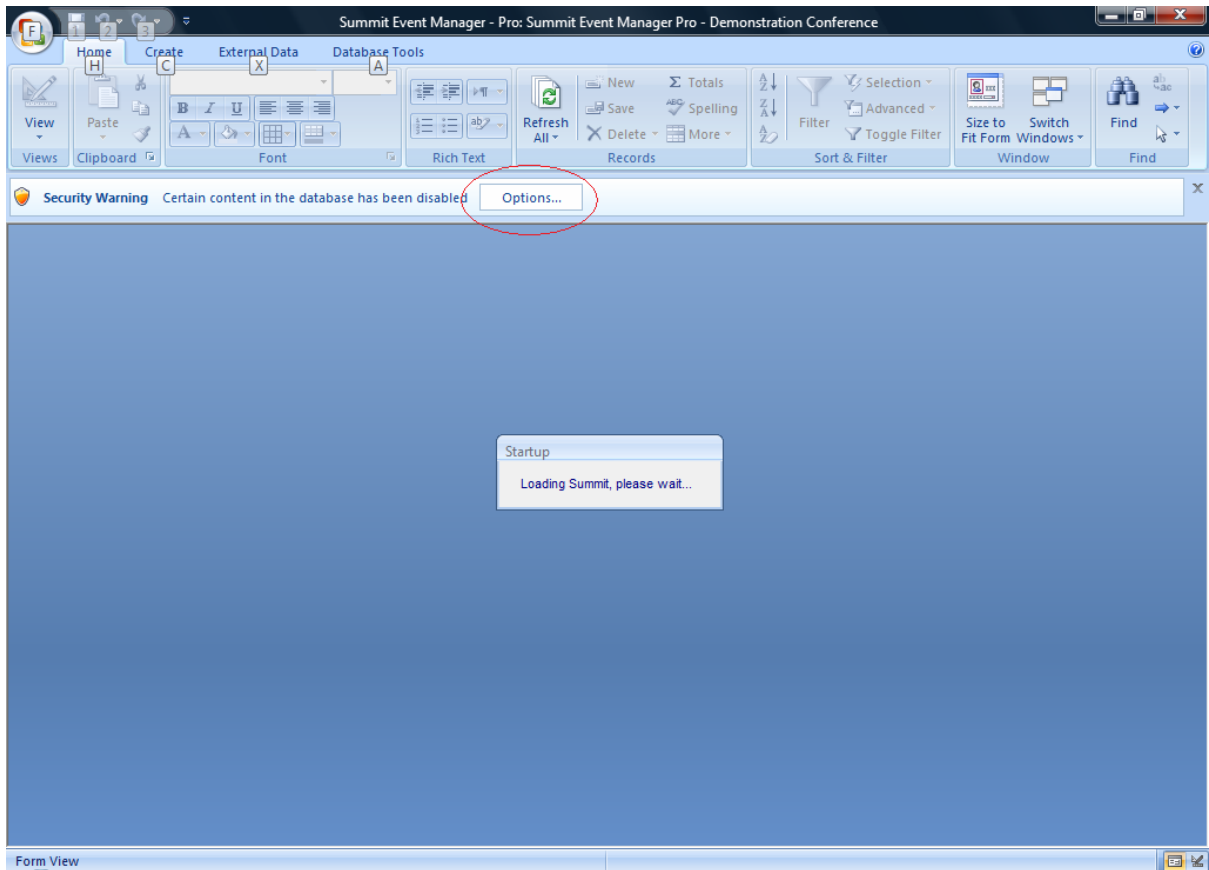
Security Warnings when Summit program is launched

When the user launches the Summit program a number of security warnings may be displayed:



The user should select Open.

The system may appear to hang displaying the image on the following page:



The user should click on the Options button highlighted above. The following will then be displayed:

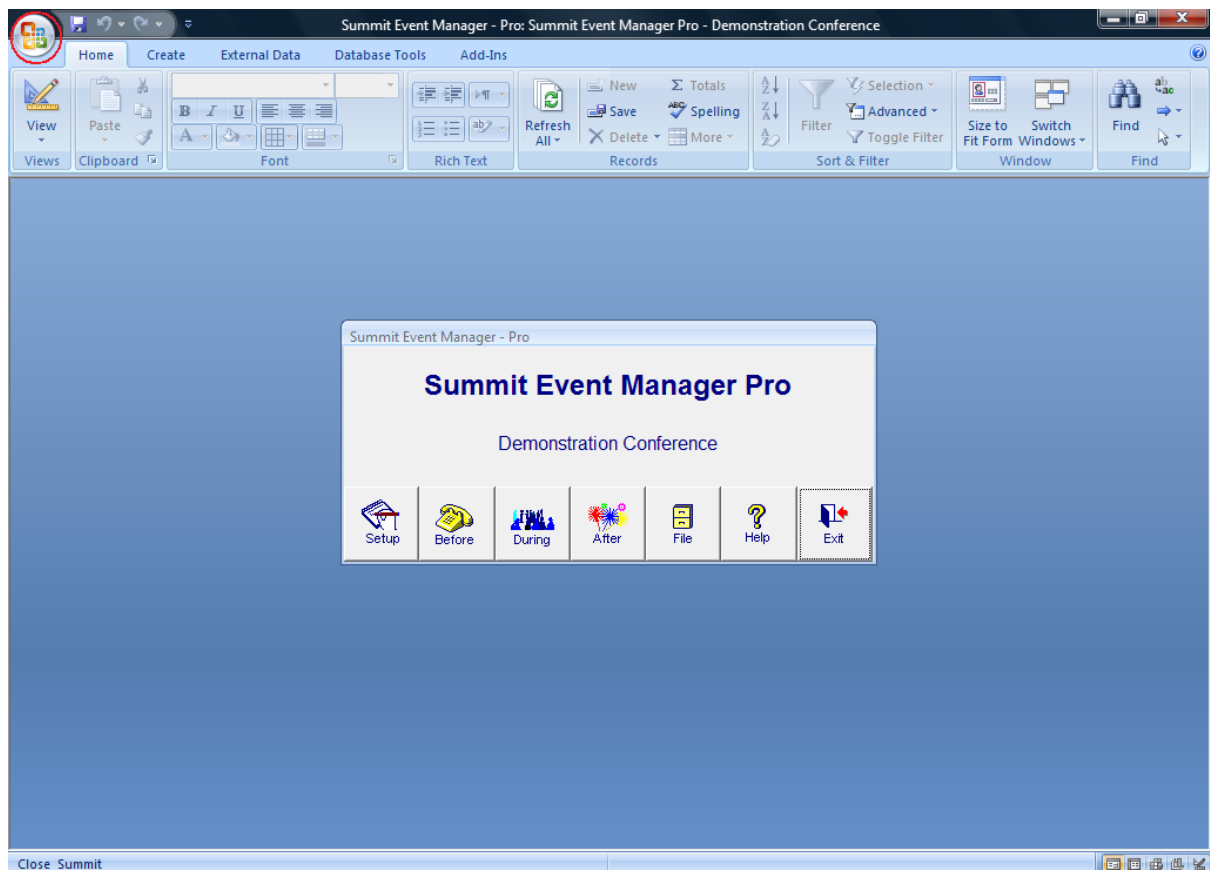


The user should select Enable this content and then click OK.

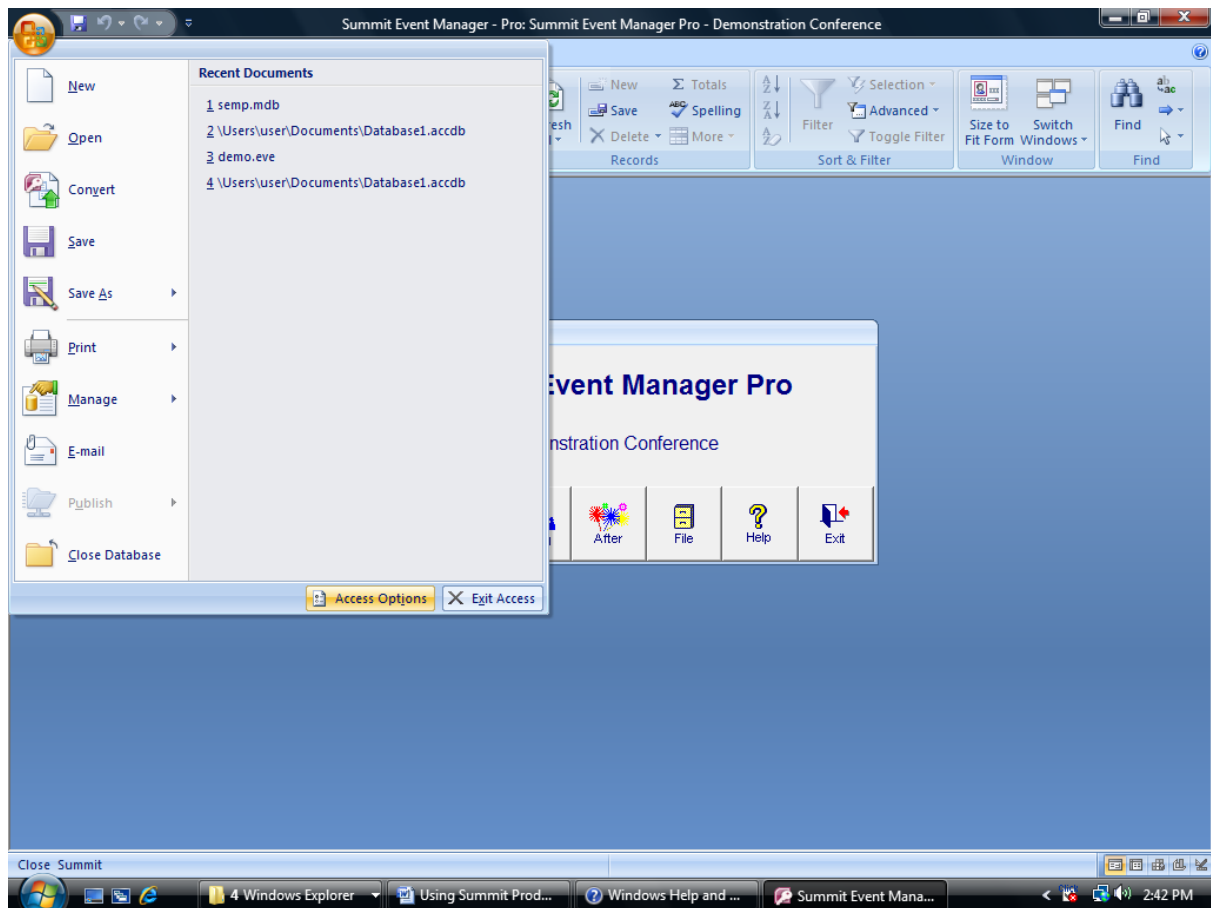
The Summit program should then open correctly.

To prevent these security warnings every time the Summit program is launched the user needs to tell Windows Vista that the Summit software is in a “trusted location”. This is done by taking the following steps from within Summit (or from any Access window).

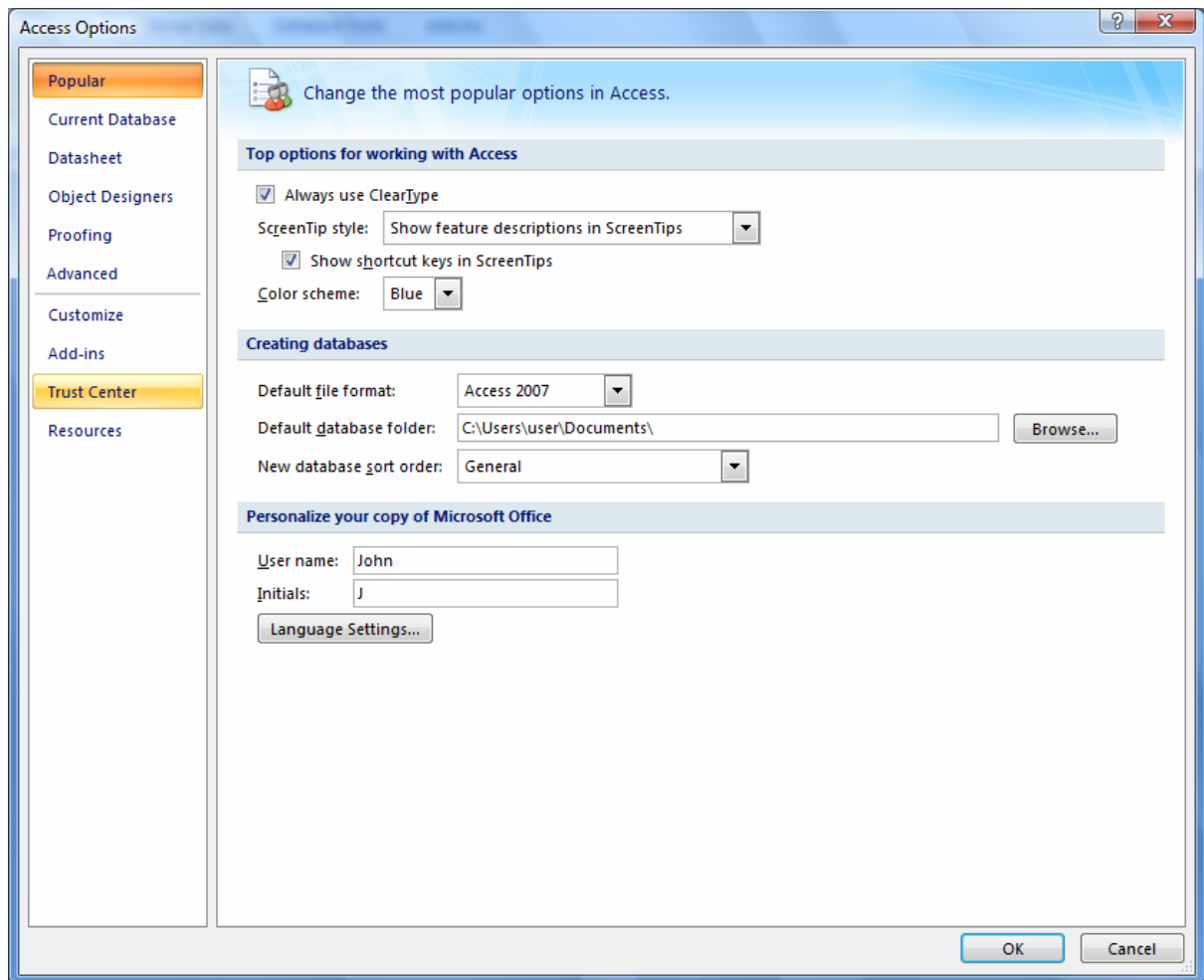
The user clicks on the Office button highlighted below:



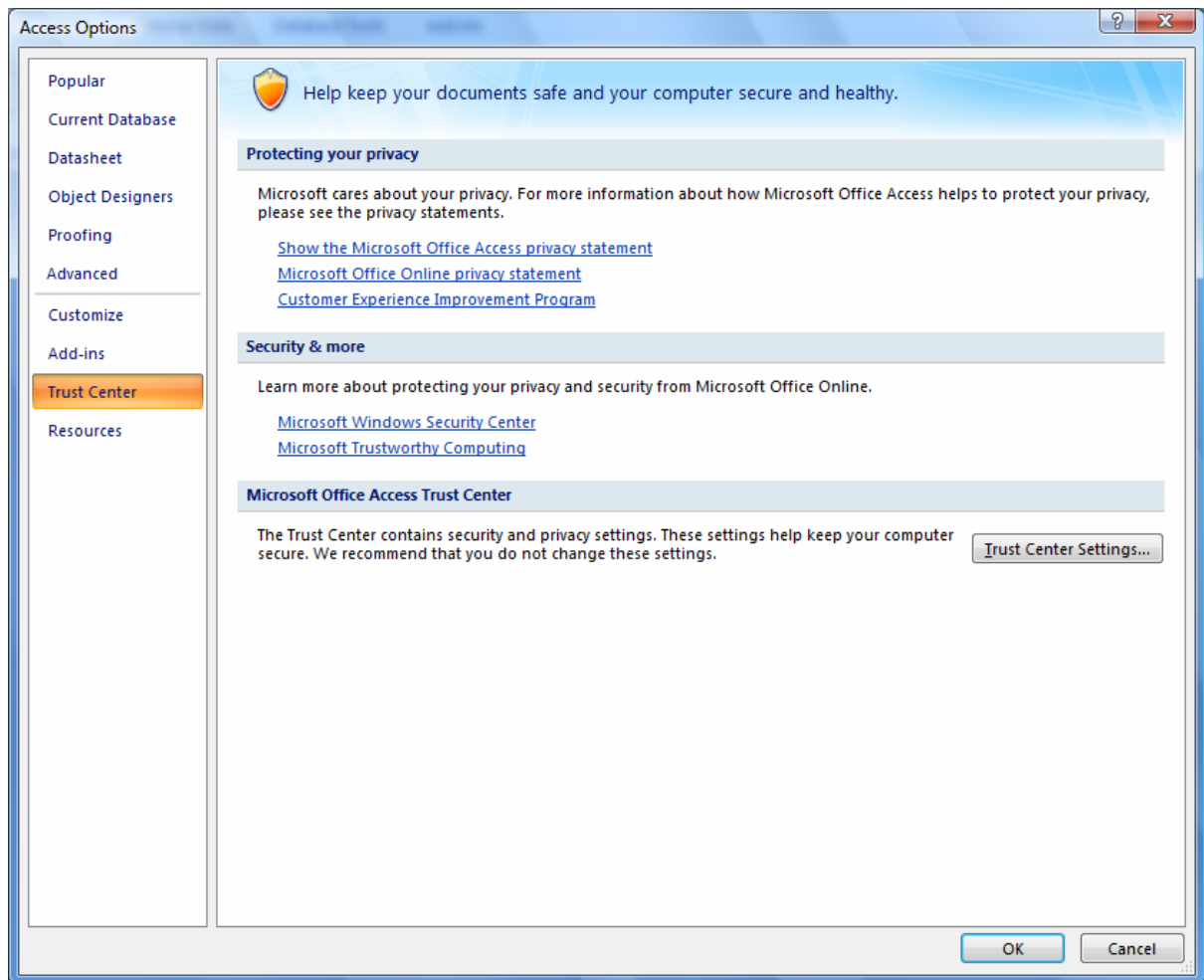
The following is then displayed:



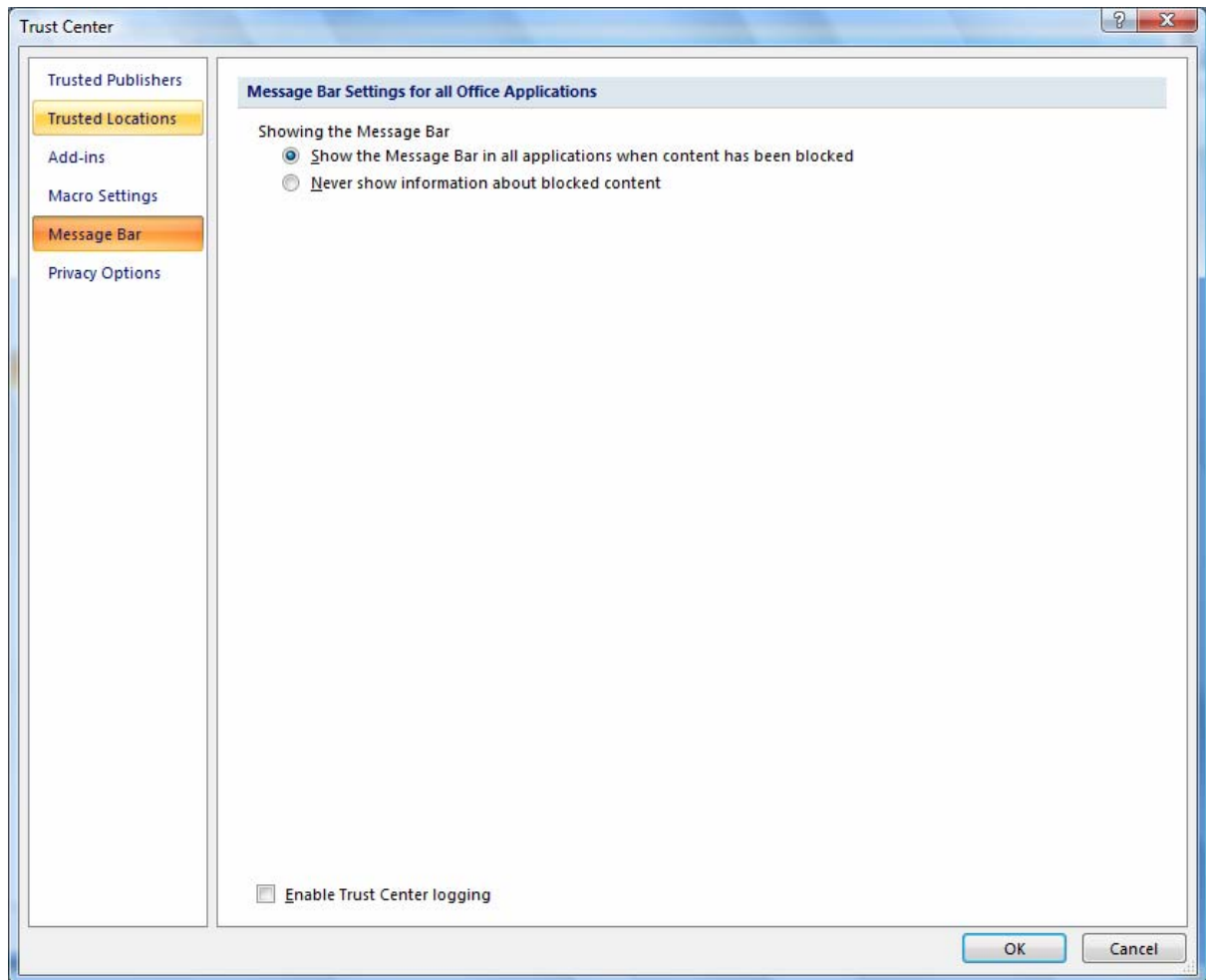
The user should click on Access Options as shown above. The following will then be displayed:



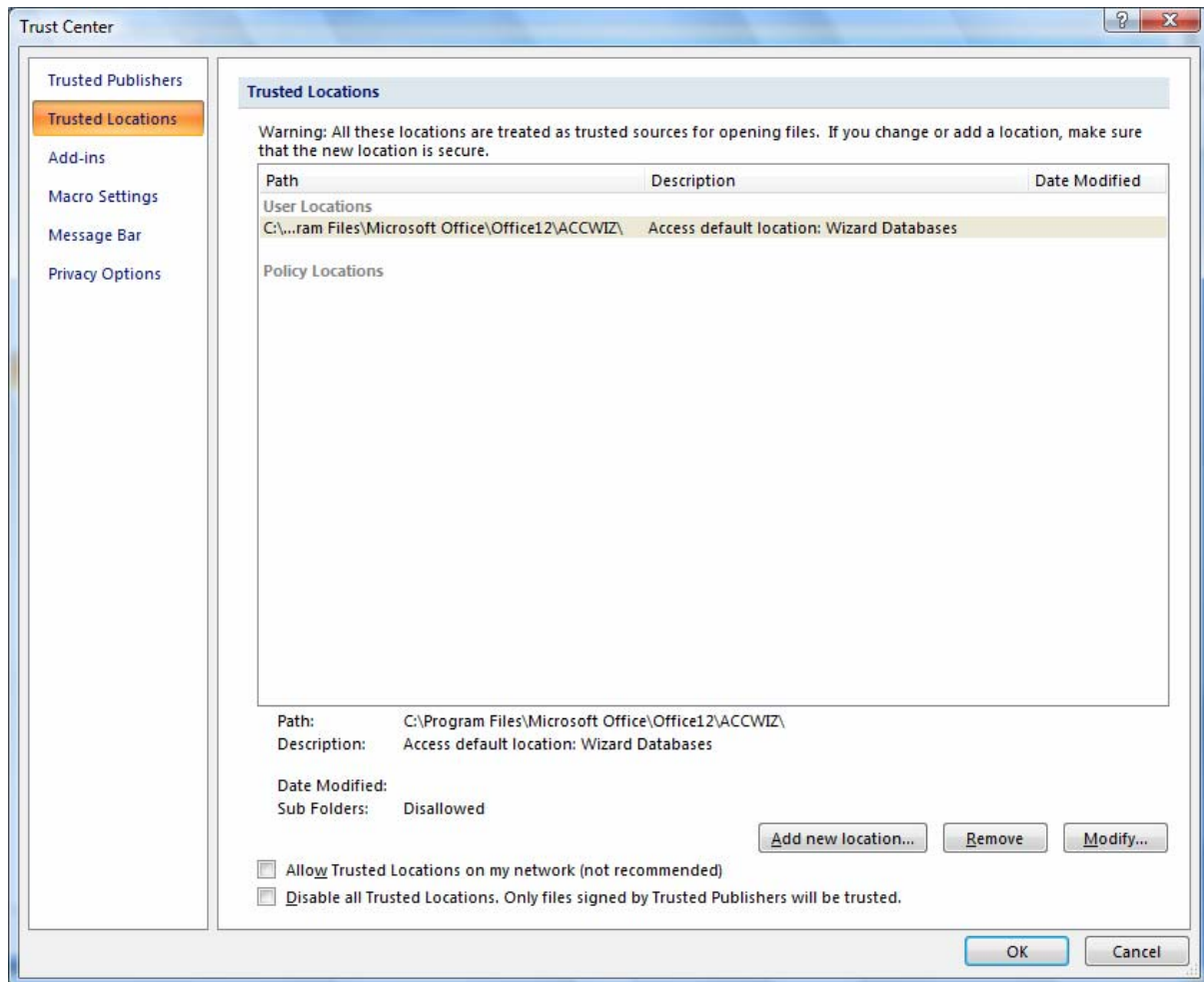
The user should select Trust Center as shown above. The following will then be displayed:



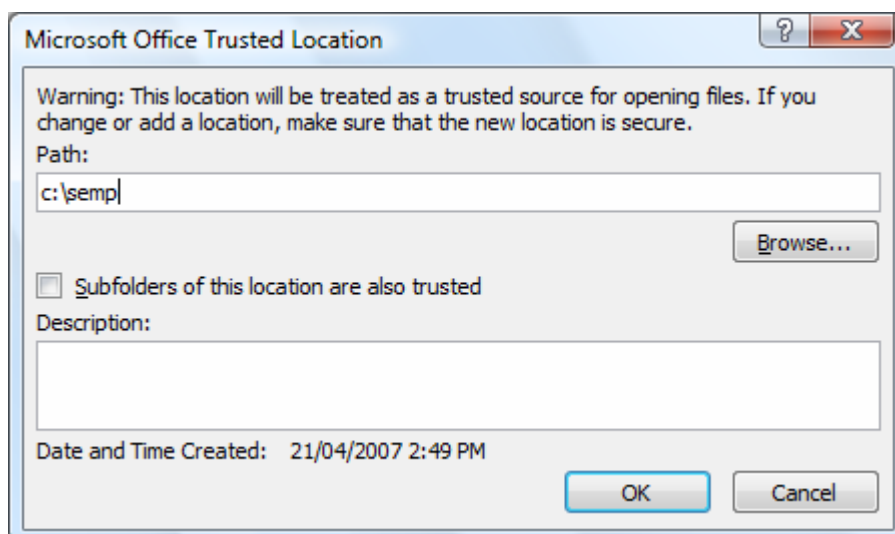
The user should then select Trust Center Settings. The following will then be displayed:



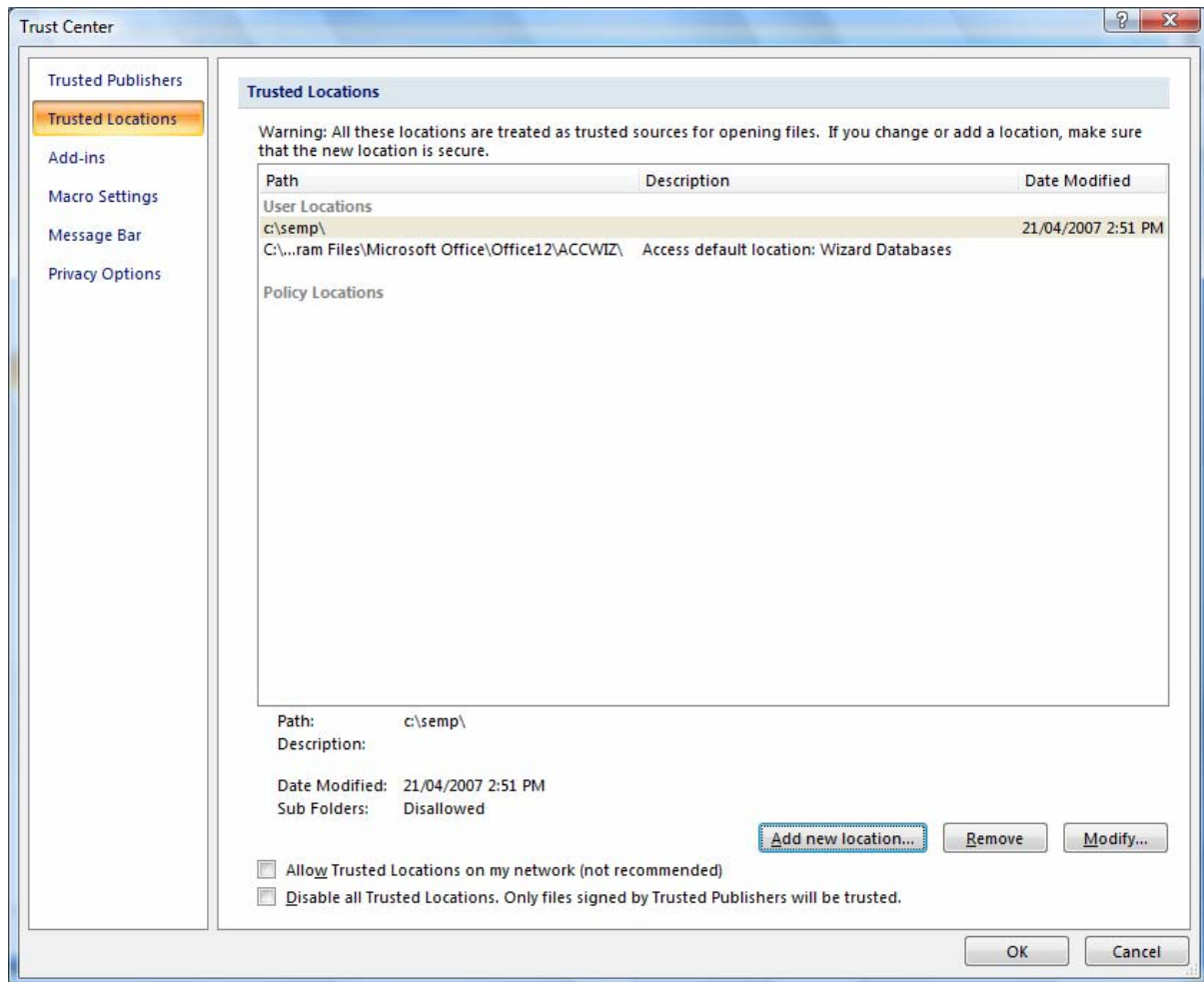
The user should then select Trusted Locations. The following will then be displayed:



The user should then select Add new location and add c:\semp as shown below:



The trusted locations should now include the c:\semp folder as shown below:



The other folders to add are:

c:\seml10 for Summit Event Manager – Light

c:\Summit for Summit Central

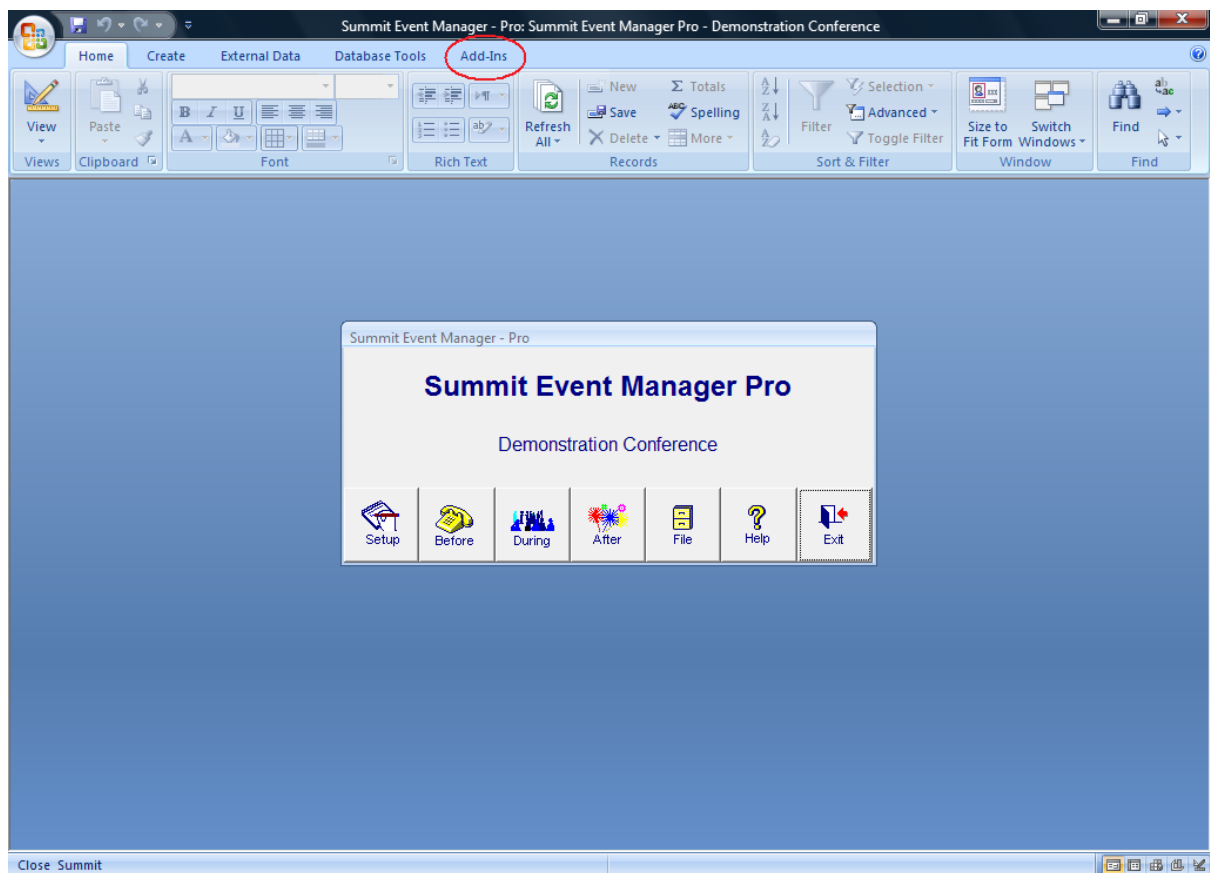
c:\ssg for Summit SafeGuard.

The next time the user launches Summit, no security warnings should be displayed.

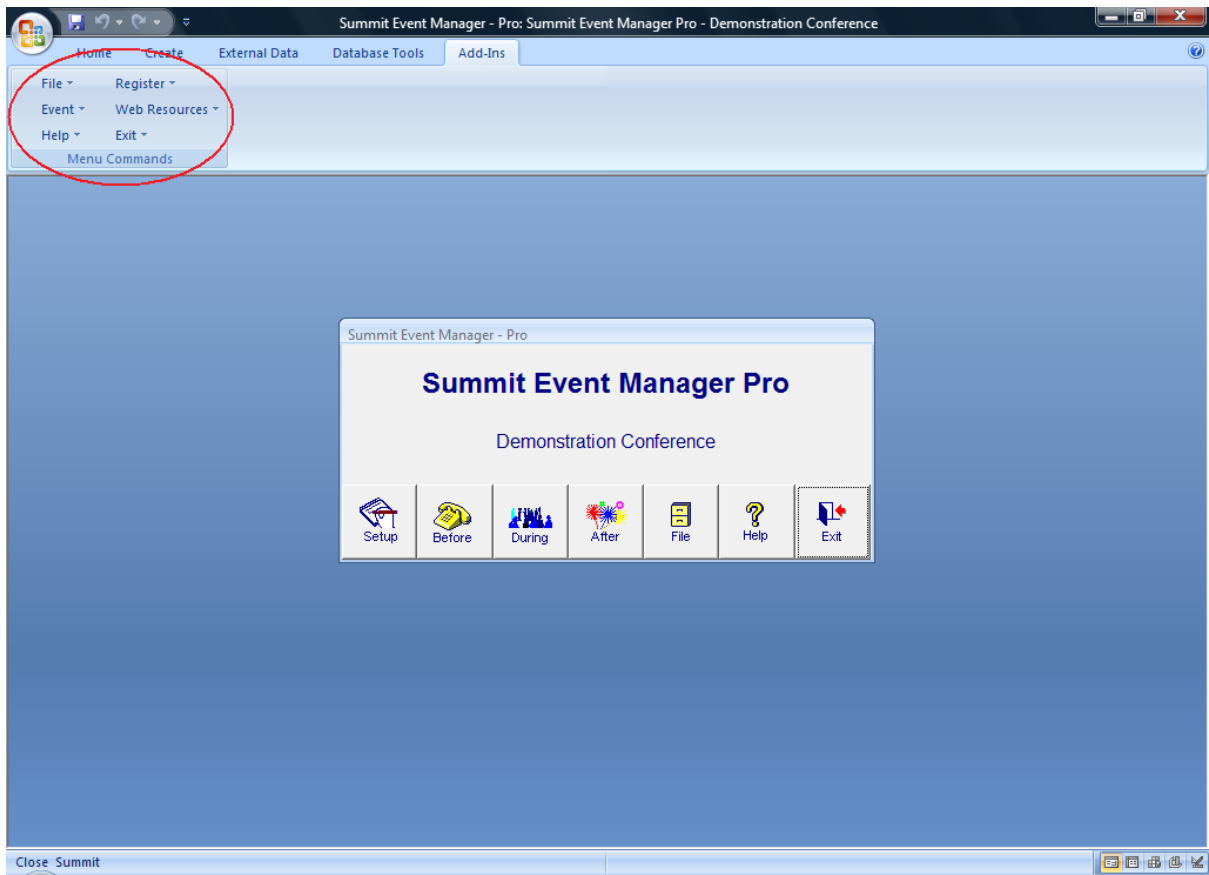
Other Issues

Summit Menus

When the user opens the Summit program the Summit menus that are normally displayed at the top of the screen are not present, as shown below:



The Summit menus are now displayed under the Add-Ins tab on the ribbon which is highlighted above. If the user selects the Add-Ins tab, the Summit menus are displayed as shown on the next page.



Summit menus highlighted above.

On-Line Help

Windows Vista does not support the Windows on-line help system we have traditionally used with Summit products.

Updated versions with a new on-line HTML help system that is supported by Windows Vista are available for:

Summit Event Manager – Pro: Version 9.33

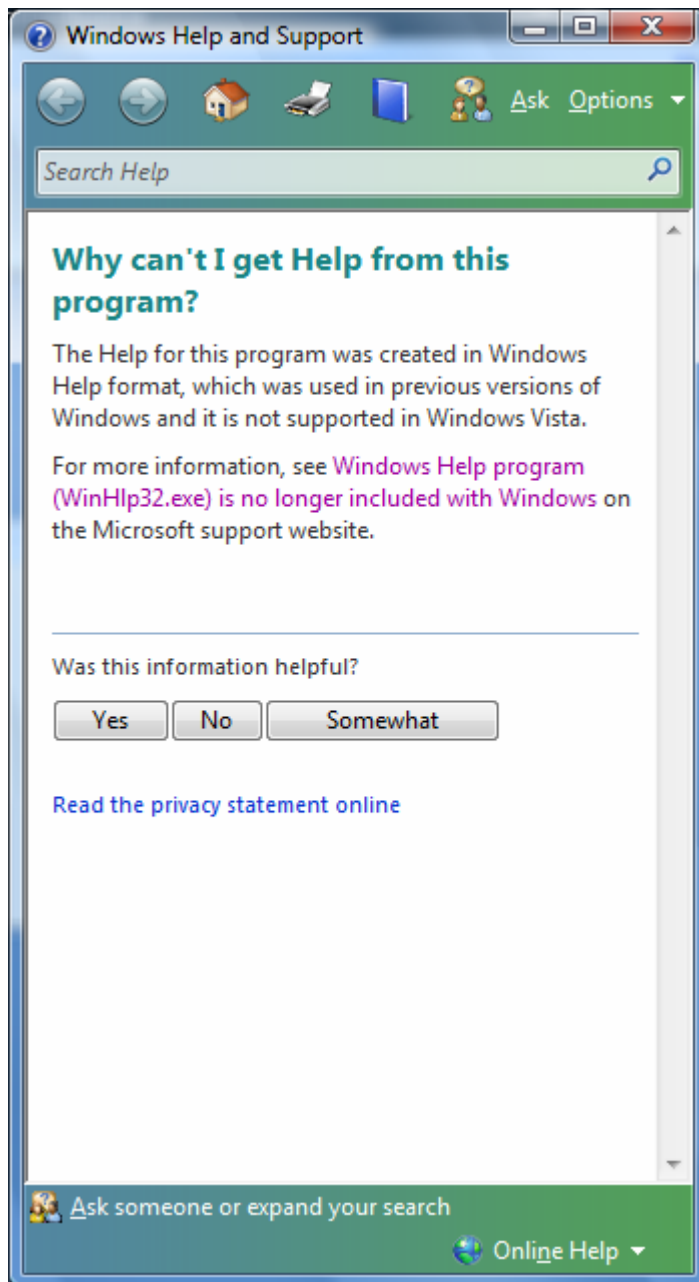
Summit Central: Version 4.09.02

Summit SafeGuard: Version 3.00.01

Download these updates from http://www.miesoftware.com/update_home.cfm

For other products, the user needs to install an additional program to be able to view the Summit on-line help. We (MIE Software and our distributors) are prohibited by Microsoft from distributing this software to any third parties or making it available for downloading from our own website, so it must be downloaded and installed by the end-user from Microsoft. The steps to download and install this program are detailed in the following pages.

When a user click on one of the help buttons, the following will be displayed:



The user should click on the [Windows Help program \(WinHlp32.exe\) is no longer included with Windows](#) hyperlink.

This will take them to the following web site:

The screenshot shows a Microsoft Knowledge Base article titled "The Windows Help (WinHlp32.exe) program is no longer included with Windows operating systems starting with Windows Vista". The page is viewed in Internet Explorer. The article includes an introduction, important notes, and a list of references. The right sidebar contains search options, article translations, and other support options. The status bar at the bottom shows the URL: mailto:?body=http%3a%2f%2fsupport.microsoft.com%2fdefault.aspx%2fb%2f917607

The Windows Help (WinHlp32.exe) program is no longer included with Windows operating systems starting with Windows Vista

Important This article contains information that shows you how to help lower security settings or how to turn off security features on a computer. You can make these changes to work around a specific problem. Before you make these changes, we recommend that you evaluate the risks that are associated with implementing this workaround in your particular environment. If you implement this workaround, take any appropriate additional steps to help protect the computer.

Important This article contains information about how to modify the registry. Make sure that you back up the registry before you modify it. Make sure that you know how to restore the registry if a problem occurs. For more information about how to back up, restore, and modify the registry, click the following article number to view the article in the Microsoft Knowledge Base:

256986 Description of the Microsoft Windows registry

On This Page

- INTRODUCTION
- Note for Help content providers who are shipping .hlp files
- Windows Vista support for WinHelp.exe
- MORE INFORMATION
- Known issues
- How to address application-compatibility issues that are related to Windows Help (WinHlp32.exe) in Windows Vista
- Registry entries and group policies
- REFERENCES

INTRODUCTION

Windows Help (WinHlp32.exe) is a Help program that has been included with Microsoft Windows versions starting with the Microsoft Windows 3.1 operating system. WinHlp32.exe is required in order to display 32-bit help content files that have the ".hlp" file name extension.

However, the Windows Help program has not had a major update for many releases and no longer meets Microsoft standards.

Article ID : 917607
Last Review : March 15, 2007
Revision : 8.1

Search Support(KB)

Advanced Search

Article Translations

Arabic

Other Support Options

- Contact Microsoft
Phone Numbers, Support Options and Pricing, Online Help, and more.
- Newsgroups
Pose a question to other users. Discussion groups and Forums about specific Microsoft products, technologies, and services.

Page Tools

- Print this page
- E-mail this page
- E-mail this page
- Save to My Support
- Favorites
- Go to My Support
- Favorites
- Send Feedback

Internet | Protected Mode: On 100%

Users should scroll down and click on the hyperlink shown below
(<http://go.microsoft.com/fwlink/?LinkID=82148>)

The Windows Help (WinHlp32.exe) program is no longer included with Windows operating systems st - Windows Internet Explorer

http://support.microsoft.com/kb/917607

The Windows Help (WinHlp32.exe) program is no...

Known issues

- How to address application-compatibility issues that are related to Windows Help (WinHlp32.exe) in Windows Vista
- Registry entries and group policies

REFERENCES

INTRODUCTION

Windows Help (WinHlp32.exe) is a Help program that has been included with Microsoft Windows versions starting with the Microsoft Windows 3.1 operating system. WinHlp32.exe is required in order to display 32-bit help content files that have the ".hlp" file name extension.

However, the Windows Help program has not had a major update for many releases and no longer meets Microsoft standards. Therefore, starting with the Windows Vista operating system release, the Windows Help program will not ship as a component of the Windows operating system. Also, third-party programs that include .hlp files are prohibited from redistributing the Windows Help program together with their products.

Users who want to view 32-bit .hlp files must download the program from the Microsoft Download Center, and then install it on their computers. Users who have not installed this program on their computer will be directed to a help topic in the Windows Vista Help and Support application. To download WinHlp32.exe, visit the following Microsoft Web site:

<http://go.microsoft.com/fwlink/?LinkID=82148>

Note for Help content providers who are shipping .hlp files

The WinHlp32.exe technology is officially obsolete, starting with the Windows Vista release. The WinHlp32.exe technology will not be supported in its current form in future Windows releases. Therefore, we strongly recommend that software developers stop using the Windows Help application in Windows Vista. Software developers who ship programs that rely on .hlp files are encouraged to transition their Help experience to an alternative Help file format, such as .chm, .html, or .xml. They will also have to change their calls from the WinHelp() API to the new content source. Several third-party tools are available to help authors convert content from one format to the other format.

Windows Vista support for WinHelp.exe

The WinHelp.exe program is a version of Windows Help that is designed for 16-bit .hlp files. The WinHelp.exe program is included with Windows Vista.

[Back to the top](#)

MORE INFORMATION

Known issues

The following list shows the known functionality regressions from previous releases of WinHlp32.exe.

- Macros are disabled**

By default, the following macros are disabled in Windows Help for Windows Vista:

- ExecFile

Print this page

E-mail this page

Microsoft Worldwide

Save to My Support

Favorites

Go to My Support

Favorites

Send Feedback

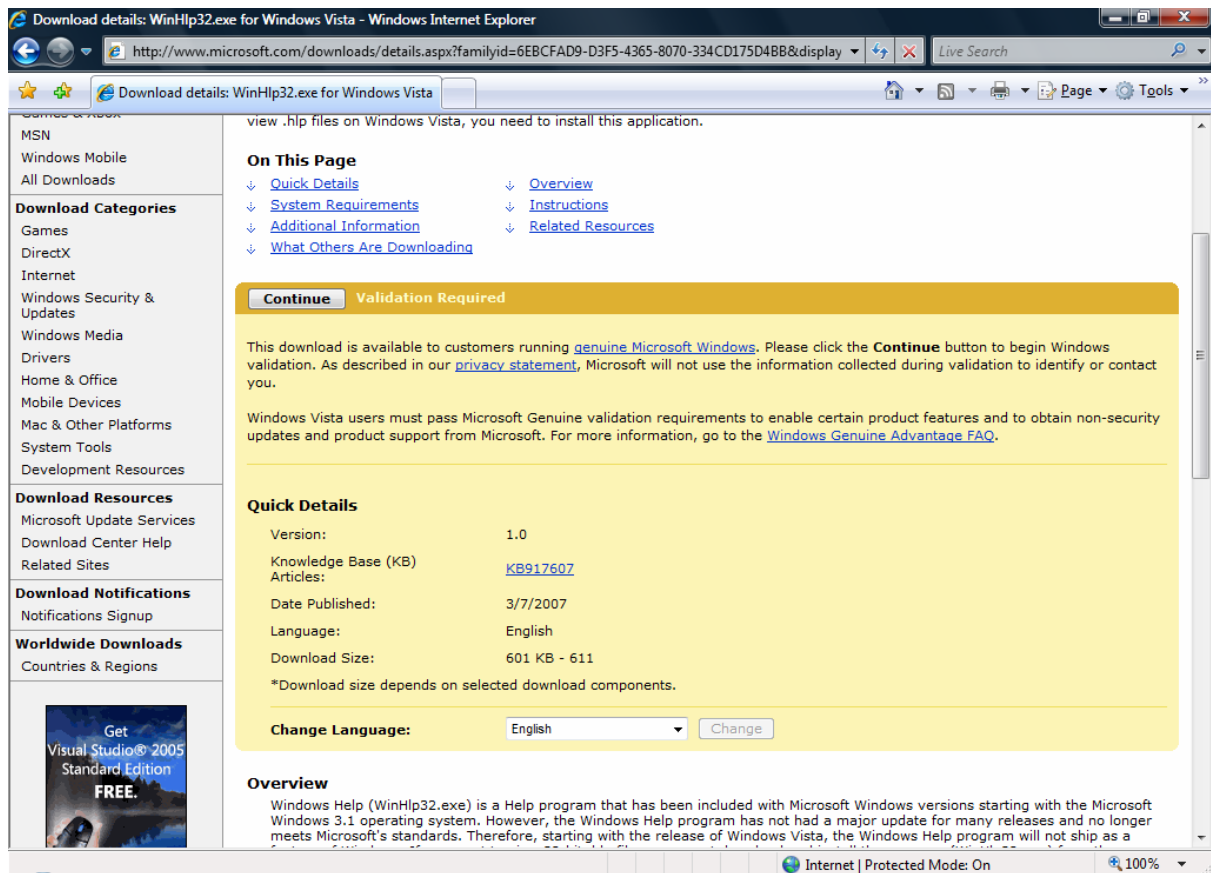
Sign In

http://go.microsoft.com/fwlink/?LinkID=82148

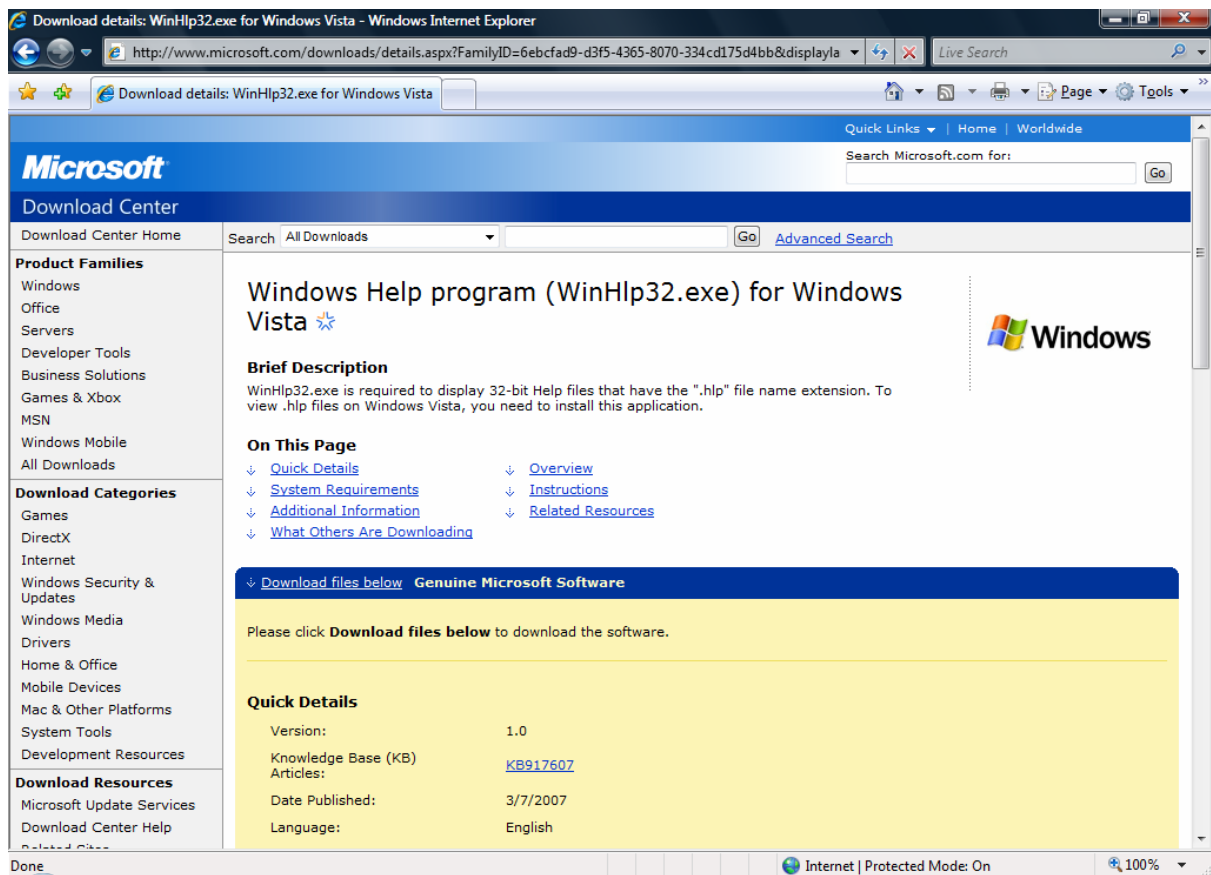
Internet | Protected Mode: On

100%

This will display the following:

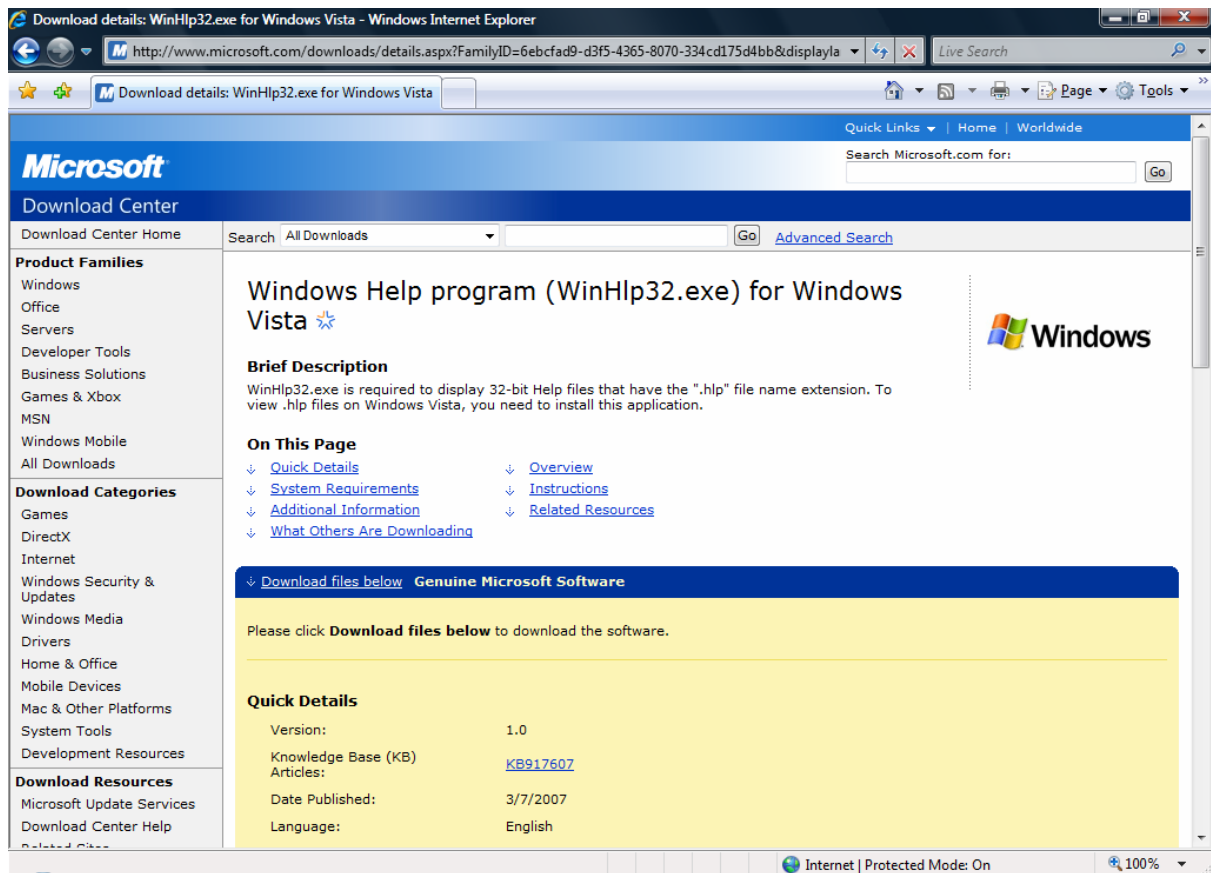


The user should then click the Continue button. The following will then be displayed:



The user should then click on the Download files below hyperlink.



The following will then be displayed:



The user should scroll down the screen until they see the following:

Files in This Download

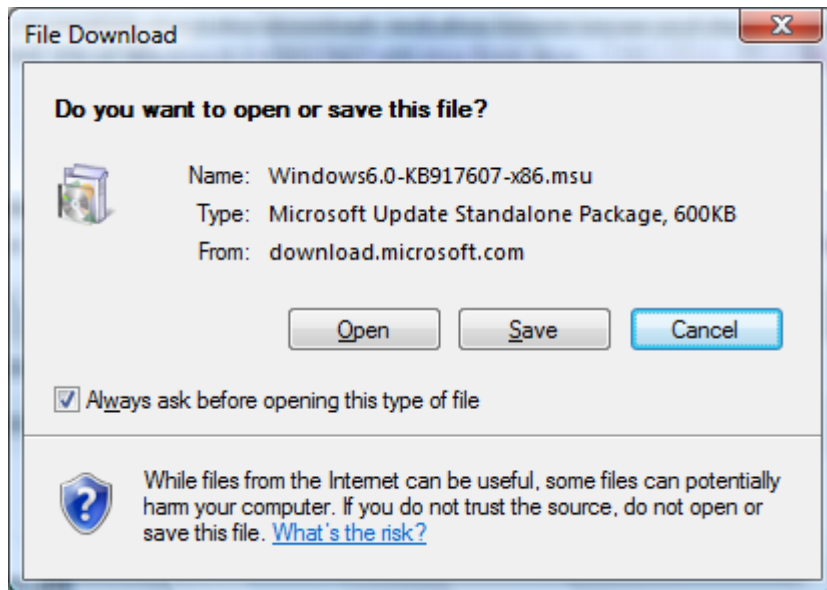
The links in this section correspond to separate files available in this download. Download the files most appropriate for you.

File Name:	File Size	
Windows6.0-KB917607-x64.msu 	611 KB	Download
Windows6.0-KB917607-x86.msu 	601 KB	Download

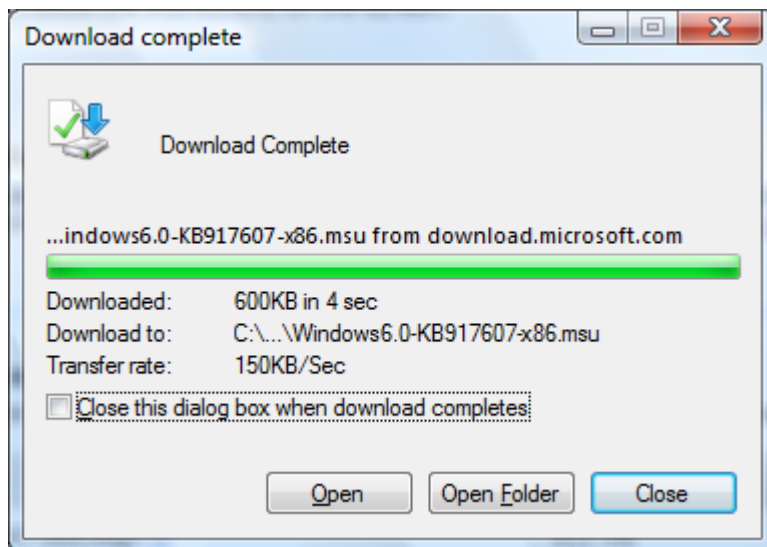
[↑ Top of page](#)

Unless the user has a 64 bit computer, they should select the Windows6.0-KB917607-x86.msu file and click on the corresponding Download button.

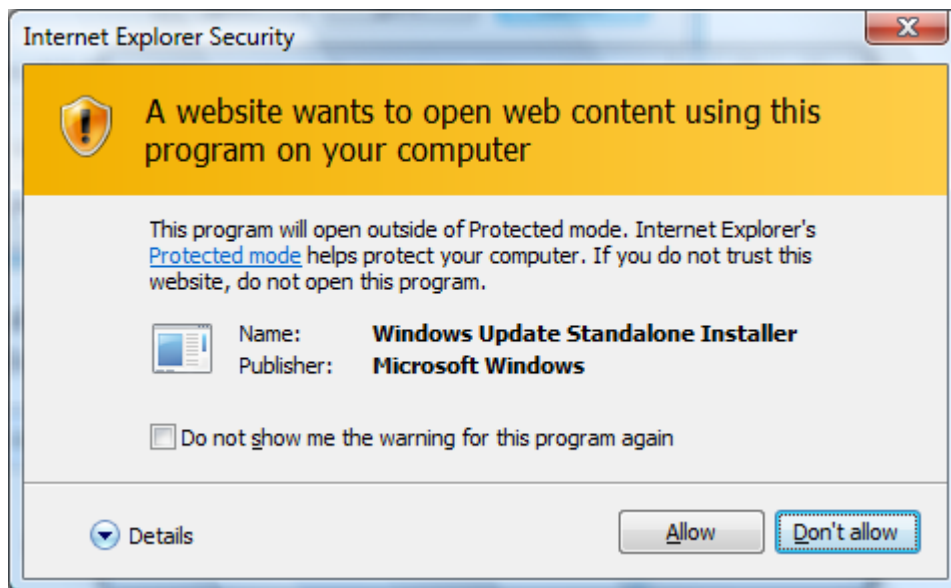
When the following is displayed:



The user should select Save, and then save it to a know location. When the download is completed the following will be displayed:

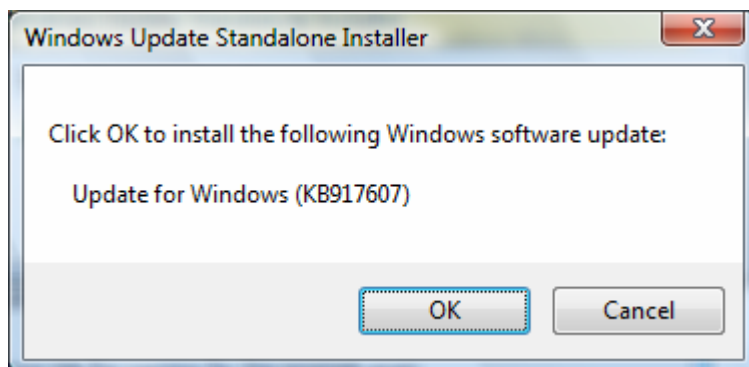


The user should select Open. The following will then be displayed:

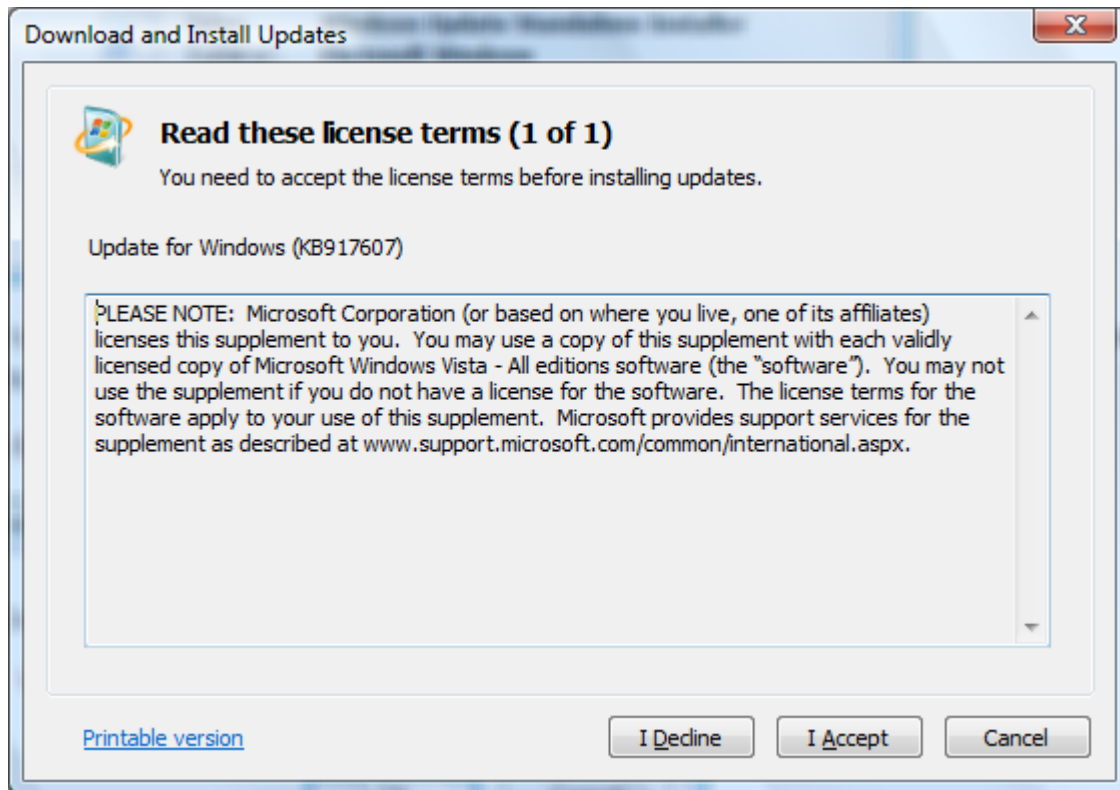


The user should select Allow. Another security warning will be displayed saying that “Windows needs your permission to continue”. The user should select Continue.

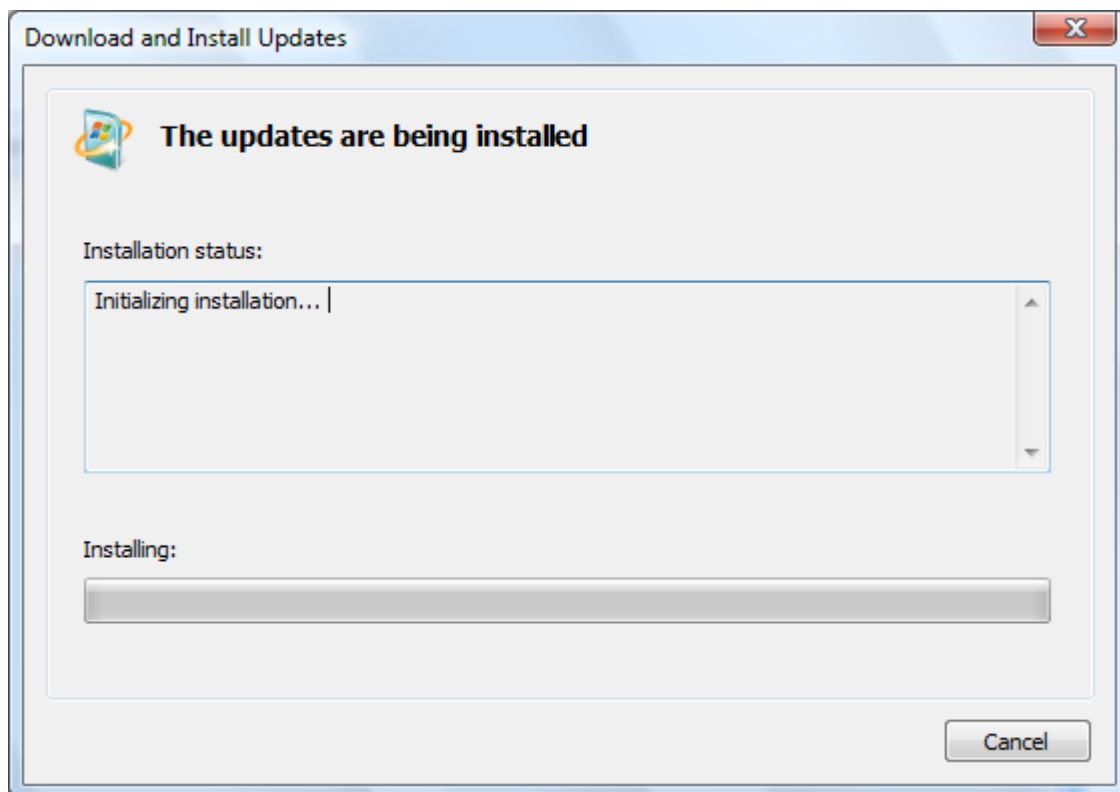
The following will then be displayed:



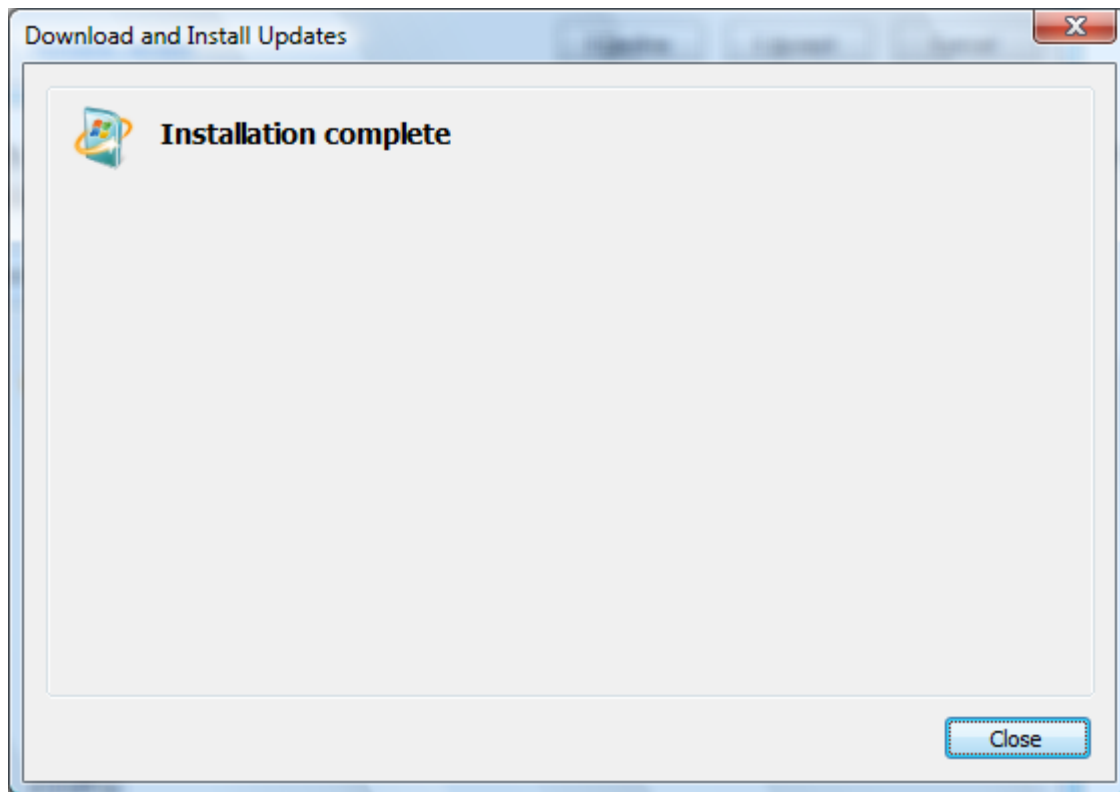
The user should click OK. The user will then be presented with a License agreement as shown below:



They should click the I Accept button. After they click I accept, the following will be displayed:



When the installation has completed the following will be displayed:



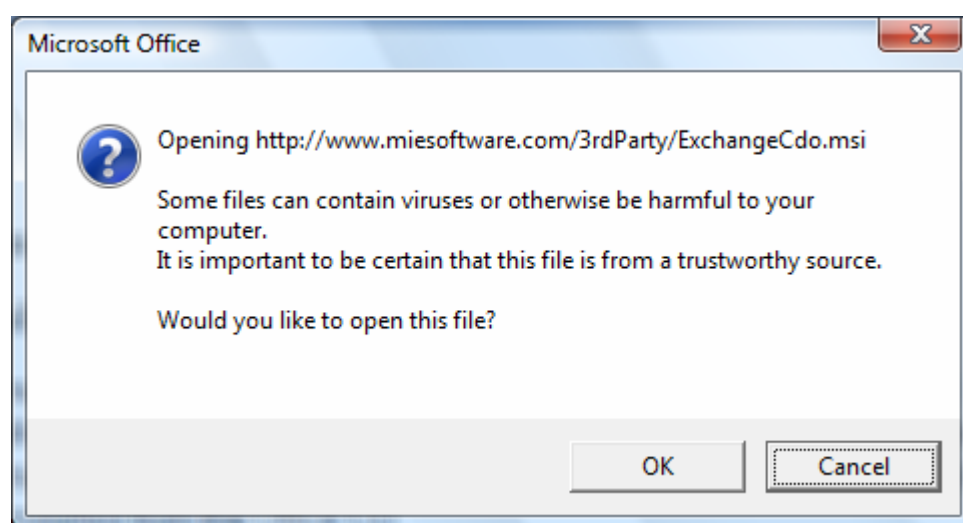
The user should click Close. The on-line help functions in all Summit products should then function correctly.

E-Mailing from within Summit Programs

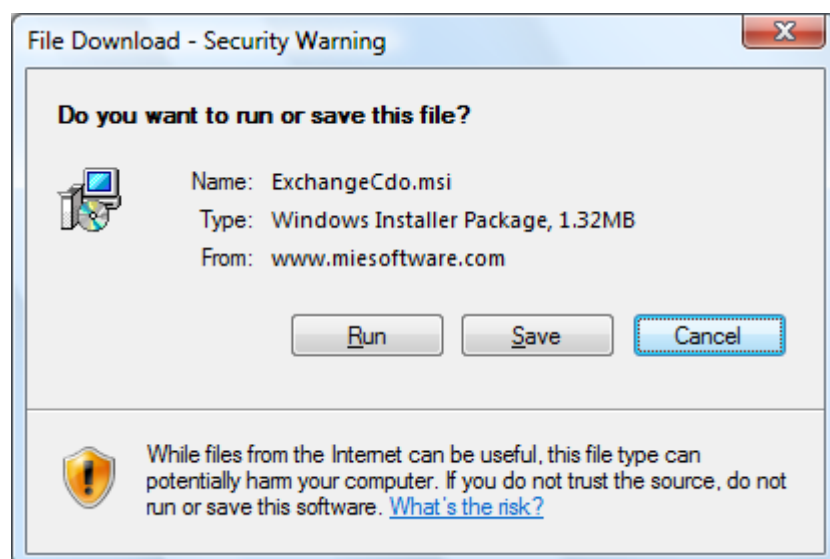
When e-mailing from within Summit programs, a Microsoft technology called Collaboration Data Objects (CDO) is used in conjunction with Microsoft Outlook. In earlier versions of Microsoft Office, CDO was an optional Outlook component that could be installed from the Office CD.

Beginning in Outlook 2007 and Exchange 2007, CDO is no longer part of the standard product installation of either product. The CDO installation software can be downloaded from the Microsoft Web site or directly from [our website](#) . A file called ExchangeCdo.msi is downloaded.

If the user downloads the file from our web site, the following will be displayed:

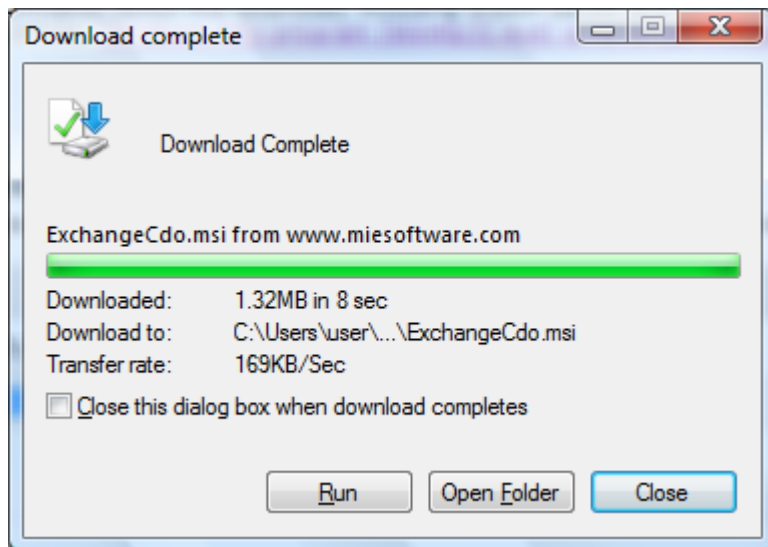


The user should click OK. The following will then be displayed:

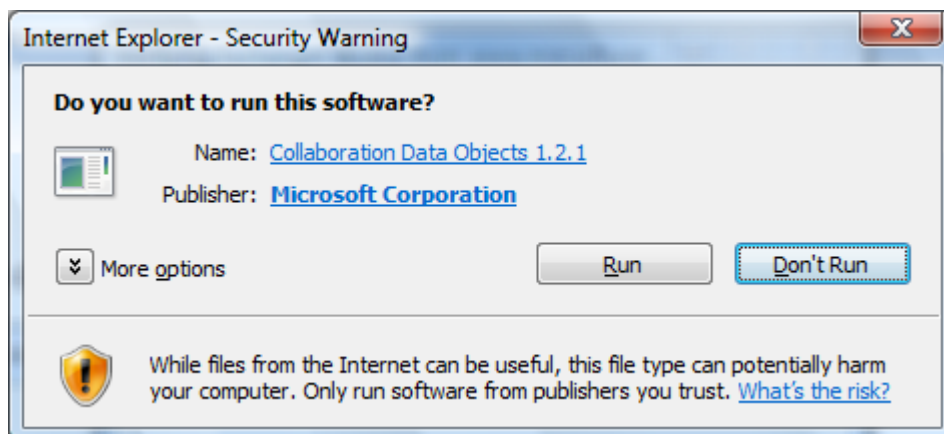


The user should click Save and save to a known location.

When the download has completed, the following will be displayed:

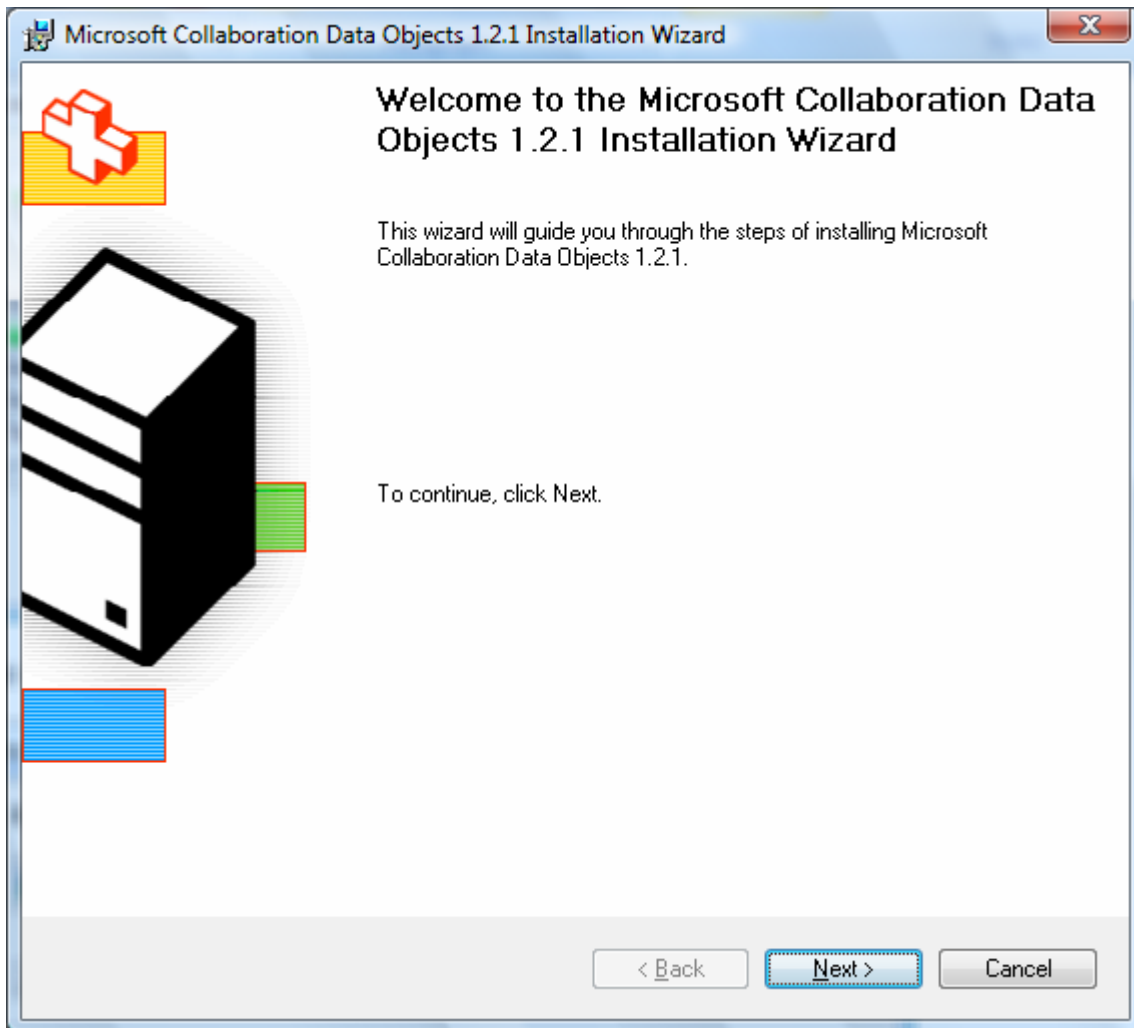


The user should click Run. The following security warning will be displayed:



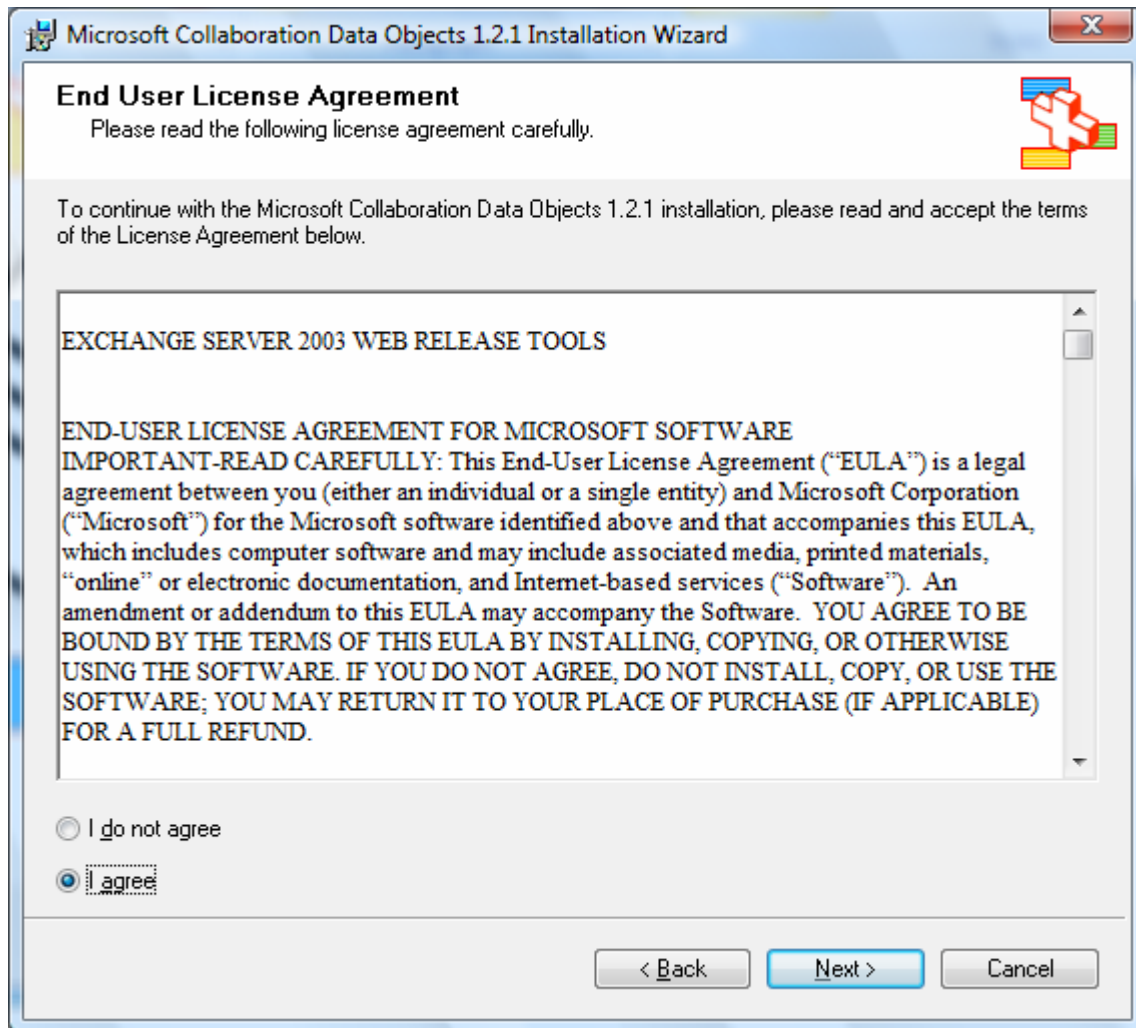
The user should click Run.

The following will then be displayed:

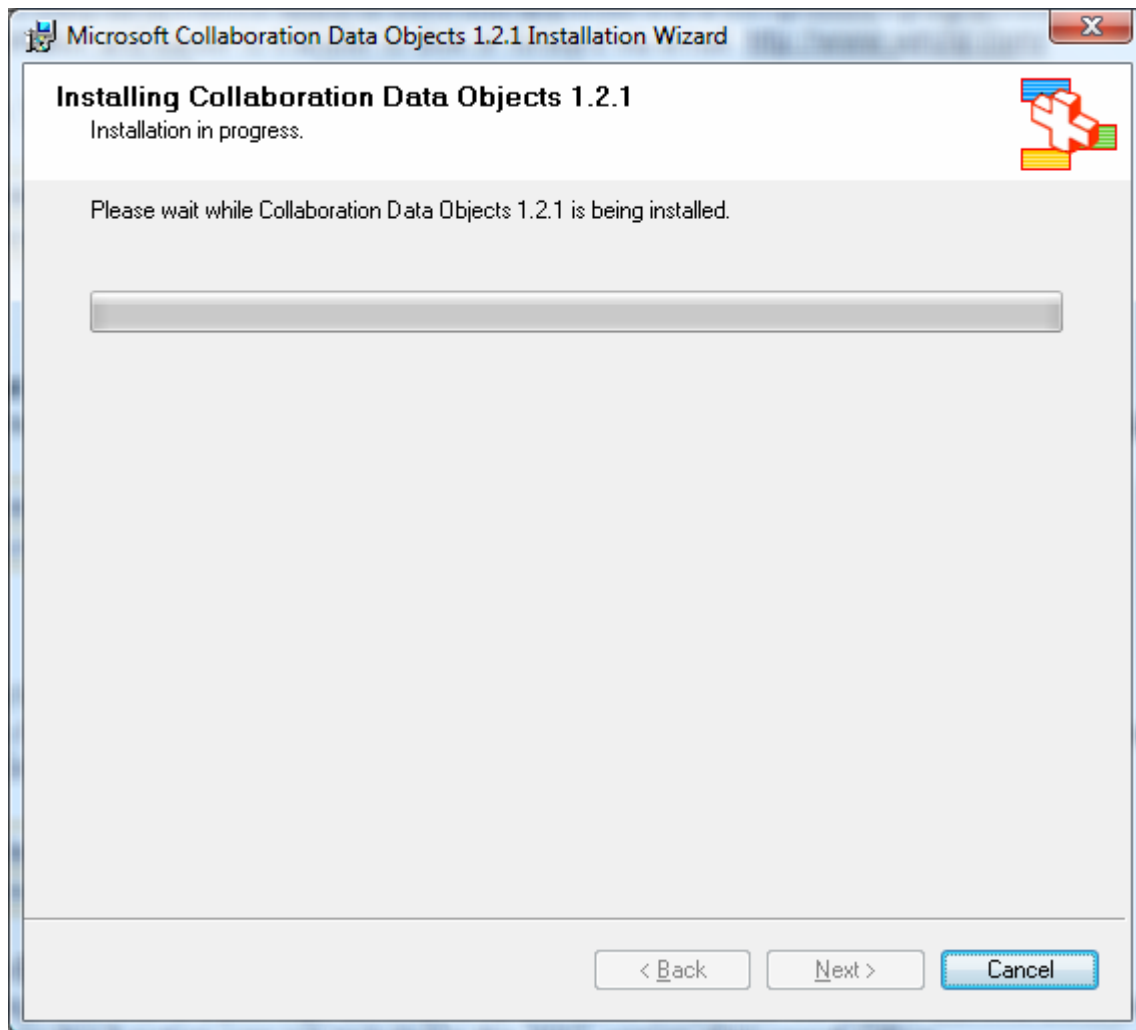


The user should click on Next.

The following will then be displayed:

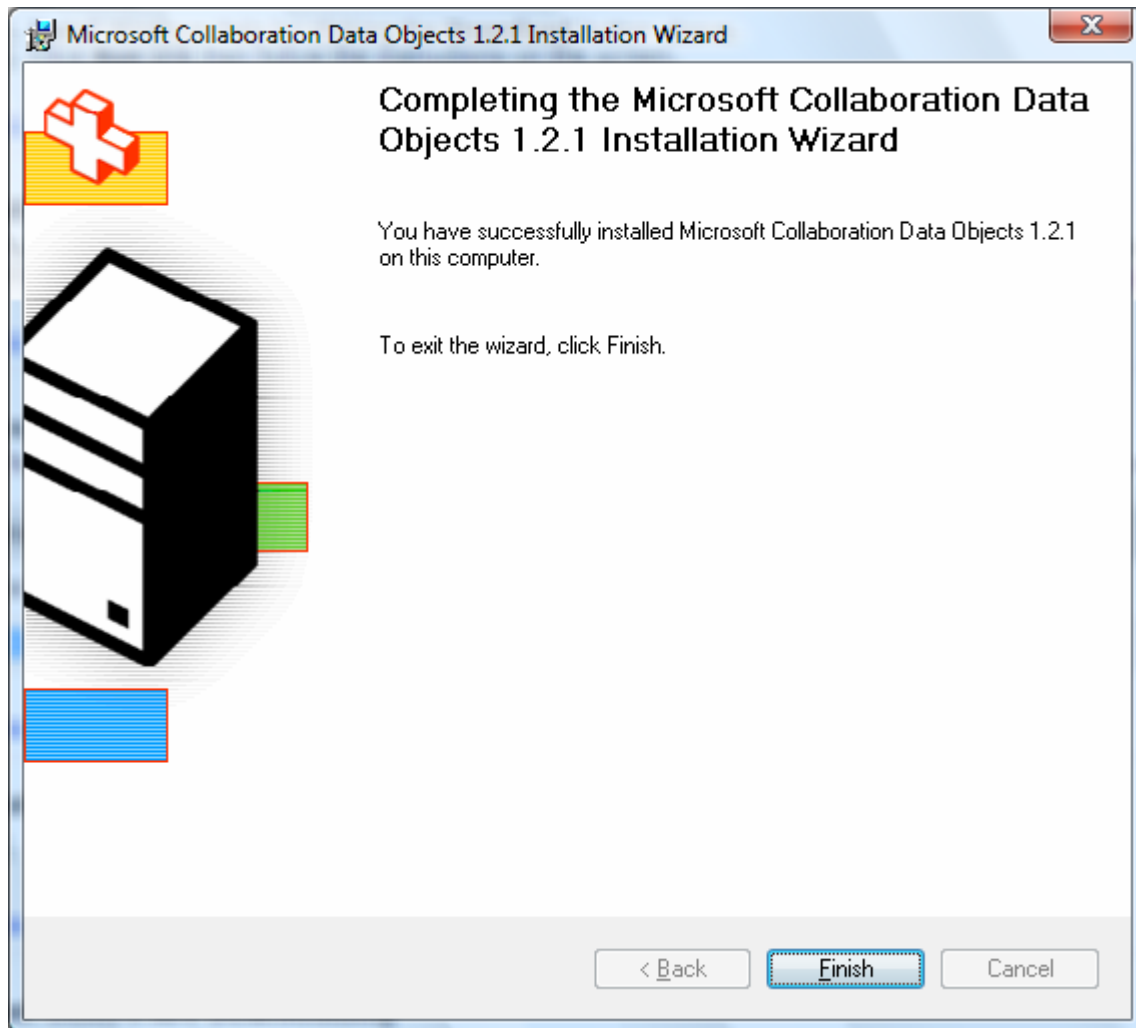


The user should select I agree and then click Next. The following will then be displayed:



A security warning will then be displayed saying that “a program needs your permission to continue”. The user should select Continue.

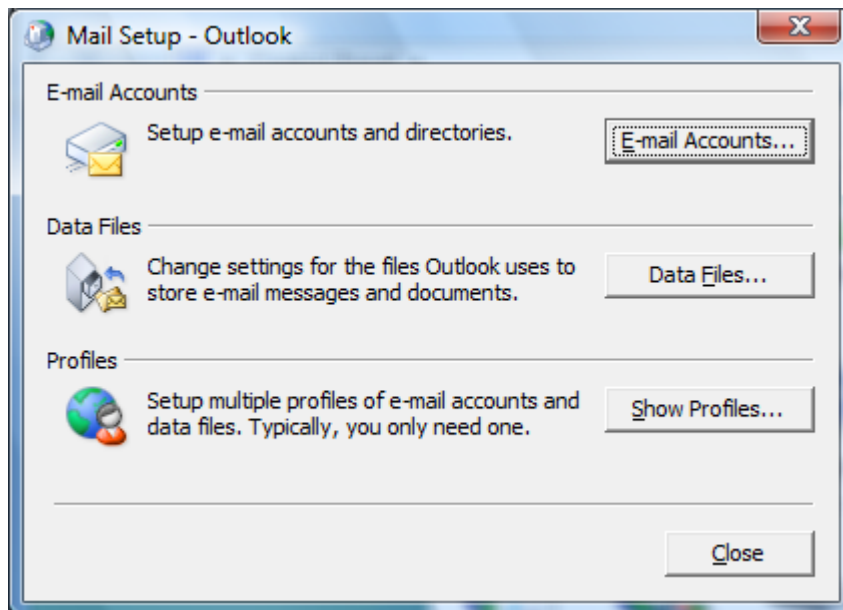
When the program completes the following will be displayed:



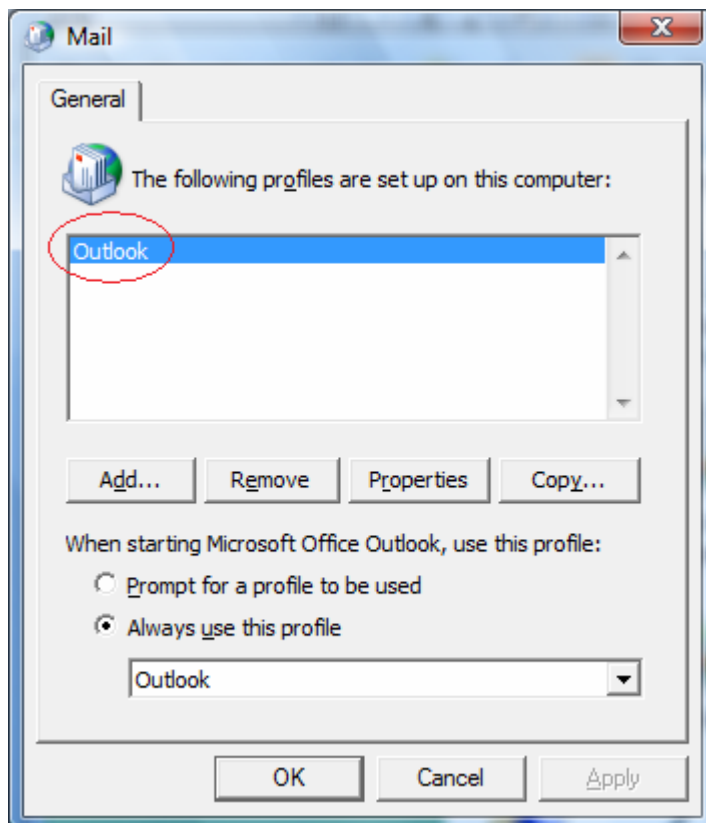
The user should then select Finish.

The final step for e-mailing from Summit is to determine your e-mail profile and then let the Summit program know what it is.

Go to your Control Panel and click on the Mail icon. The following will be displayed:



Click on show profiles. The following will then be displayed:

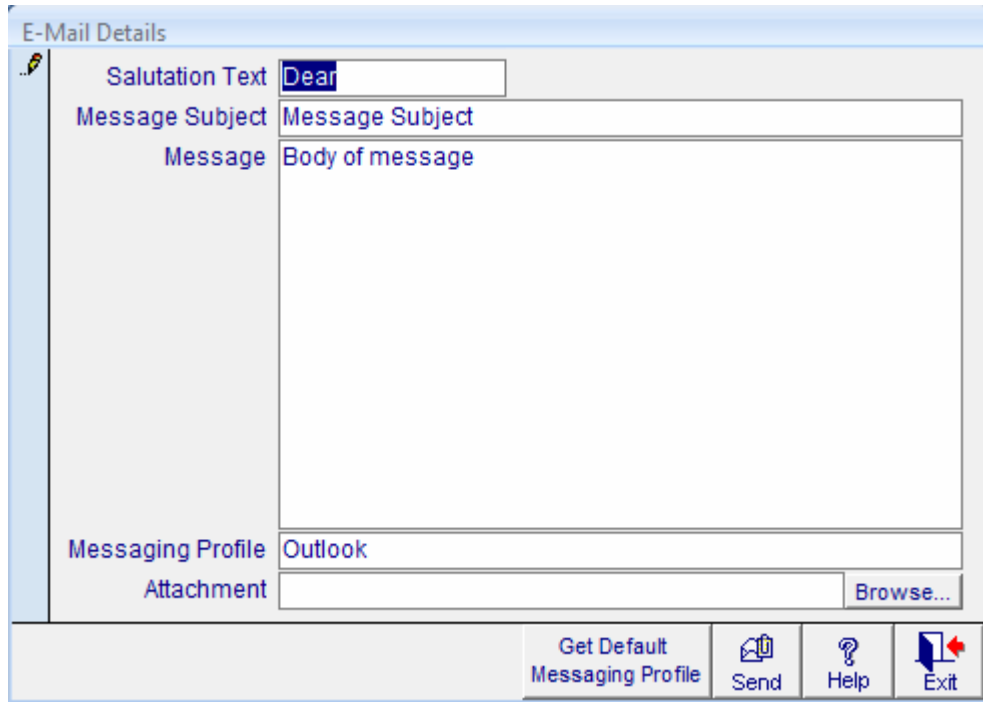


Note down the profile.

Start up Summit and open the Personal Details form (Summit Event Manager) or the People form (Summit Central).

Go to a record where a person has an e-mail address and double click on the e-mail address.

The following will then be displayed:



The screenshot shows a window titled "E-Mail Details" with a light blue border. On the left side, there is a vertical list of labels: "Salutation Text", "Message Subject", "Message", "Messaging Profile", and "Attachment". To the right of these labels are input fields. The "Salutation Text" field contains the word "Dear". The "Message Subject" field contains the text "Message Subject". The "Message" field is a large, empty text area with the text "Body of message" at the top. The "Messaging Profile" field contains the text "Outlook". The "Attachment" field is empty and has a "Browse..." button to its right. At the bottom of the window, there is a horizontal toolbar with four buttons: "Get Default Messaging Profile" (with a folder icon), "Send" (with an envelope icon), "Help" (with a question mark icon), and "Exit" (with a red X icon).

Enter the profile into the Messaging Profile field as shown above and then click Exit.